



SURFACE PREPARATION

THE SURFACE	HOW TO PREPARE	THE SOLUTION
<p>PREVIOUSLY PAINTED WALLS</p>	<p>Golden rule: All surfaces must be clean, dry and sound.</p> <p>Paint in good condition - Waterbased</p> <ul style="list-style-type: none"> • Clean thoroughly with Polycell Sugar Soap • Allow to dry and apply a chosen Plascon top coat <p>Enamel in good condition - Solvent based</p> <p><i>If applying a water based or solvent based Plascon top coat:</i></p> <ul style="list-style-type: none"> • Clean with Polycell Sugar Soap, rinse and allow to dry • Sand thoroughly to an even matt finish, dust off • Apply 1 coat Plascon Universal Undercoat (UC 1) • Allow to dry and finish with a chosen Plascon top coat <p>Paints and enamels in poor condition</p> <ul style="list-style-type: none"> • Remove paint completely using a suitable Plascon RemovALL coating remover and proceed as for surfaces in good condition (see above) 	
<p>UNPAINTED WALLS CEMENT PLASTER, CONCRETE AND FIBRE CEMENT</p>	<p>Golden rule: All surfaces must be clean, dry and sound.</p> <ul style="list-style-type: none"> • Tap the surface with the edge of a R5 coin, hollow sounding areas must be chopped out and replastered with Polycell Masonry Patching Plaster • Always prime bare and repaired areas with Plascon Plaster Primer (UC 56) • Allow to dry and finish with a chosen Plascon top coat 	
<p>UNPAINTED WALLS INTERIOR CRETSTONE, RHINOGLIDE AND RHINOGLIDE</p>	<p>Golden rule: Rhinoglide can be sanded, Cretestone and Rhinolite must be trowelled to a smooth firm nonpowdery surface.</p> <p>NB: No water based paint should be used directly onto these surfaces.</p> <ul style="list-style-type: none"> • Always prime bare & repaired areas with Plascon Plaster Primer (UC 56) or Plascon Bonding Liquid (CV1 14) • Allow to dry and finish with a chosen Plascon top coat 	
<p>WINDOW SILLS EXTERIOR</p>	<p>Uncoated concrete/plaster or paint in poor condition</p> <ul style="list-style-type: none"> • Strip paint completely using a scraper and/or sandpaper • Prime with Plascon Plaster Primer (UC 56), allow to dry • Waterproof using Plascon Multiseal (WSS 2), see waterproofing in this book for details • Overcoat with a suitable Plascon product for window sills <p>Paint in good condition</p> <ul style="list-style-type: none"> • Prepare as per previously painted walls 	





THE SURFACE	HOW TO PREPARE	THE SOLUTION
<p>MILD STEEL</p>	<p>Golden rule: Remove contaminants (rust & mill scale).</p> <ul style="list-style-type: none"> • Scrub surface with RemovALL High Strength Cleaner & Degreaser and Plascon Steeltect Aqasolv Degreaser • Allow time to dry • Wire brush or emery paper the rusted area to bright metal, dust off • Prime with Plascon Metal Primer (UC 501) • Allow to dry and finish with a chosen Plascon top coat 	
<p>GALVANISED IRON</p>	<p>Golden rule: Obtain a water break-free surface* before painting.</p> <p><i>*Pour half a cup of water on surface and wipe your hand through it, the water must run freely, if it collects in droplets it is not water break-free.</i></p> <ul style="list-style-type: none"> • Clean by brushing on Plascon Steeltect Galvanised Iron Cleaner onto the entire surface and rinse with water • Repeat cleaning until a water break-free surface is achieved • Apply one coat of Plascon Steeltect Galvanised Iron Primer to cleaned galvanised surface • Allow to dry and finish with a chosen Plascon top coat 	





ROOFS / SURFACE PREPARATION

THE SURFACE	HOW TO PREPARE	THE SOLUTION
ROOFS	<p>Golden rule : Clean & seal roofs before top coating</p>	
	<p>Galvanised roofs:</p> <ul style="list-style-type: none"> • Clean by brushing on Plascon Steeltect Galvanised Iron Cleaner onto the entire surface and rinse with water • Repeat cleaning until a water break-free* surface is achieved • If under 1km from the sea, first use Plascon Plascosafe 18 Primer (EMS 18) • Prime with Plascon Steeltect Galvanised Iron Primer 	
	<p>Rusted galvanised roofs:</p> <ul style="list-style-type: none"> • Emery paper or wire brush rusted areas to bright metal • Brush Plascon Steeltect Galvanised Iron Cleaner onto entire surface and leave to react for 2 minutes • Hose and scrub down with tap water using hard bristle brush, or broom to obtain a water break-free surface* • Patch prime prepared bright metal areas, where galvanising has been depleted by rust using Plascon Plascosafe 18 Primer (EMS 18) • If under 1km from the sea, prime entire roof with Plascon Plascosafe 18 Primer (EMS 18) • Prime with Plascon Steeltect Galvanised Iron Primer 	
<p>Cement or fibre cement tiles or previously painted roofs:</p> <ul style="list-style-type: none"> • Scrub surface using a Polycell Sugar Soap solution and bristle brooms • Rinse thoroughly with tap water in conjunction with bristle brooms • Allow to dry completely • Apply Plascon Bonding Liquid (CVI 14) 		





COMMON PROBLEMS





THE PROBLEM	HOW TO FIX	THE SOLUTION
-------------	------------	--------------

HAIRLINE OR SPIDERWEB CRACKS (1MM)



- If it shows fungus, scrub affected area with household bleach mixed 1 part bleach to 2 parts water
- Wash walls with Polycell Sugar Soap solution
- Allow to dry thoroughly
- **Previously painted**
 - Prime with Plascon Plaster Primer (UC 56)
 - Brush or roll Plascon Multiseal (WSS 2) thinned 10% with water, over hairline cracks
 - Allow to dry and finish with a chosen Plascon top coat
- **New**
 - Thin Multiseal 10% with water and then brush over hairline cracks
 - Allow to dry and finish with a chosen Plascon top coat



PLASTER CRACKS (LESS THAN 4MM)



- Open cracks to a minimum of 3mm wide and deep
- Remove dust and prime inside of crack with Plascon Plaster Primer (UC 56)
- Fill cracks with Polyfilla (interior or exterior) or Mendall 90 using a scraper, smoothing off whilst still wet
- Sand smooth after 8 hours
- Patch-prime repaired areas with Plascon Plaster Primer (UC 56)
- Allow to dry and finish with a chosen Plascon top coat



PLASTER CRACKS (MORE THAN 4MM)



- Open cracks to a minimum of 5mm wide and deep
- Remove dust and fill cracks with Polyfilla Masonry Patching Plaster using a spatula
- Prime repaired areas with Plascon Plaster Primer (UC 56)
- Make repaired areas invisible by rolling or brushing a coat of Plascon Multiseal (WSS 2) over the repaired area
- Allow to dry and finish with a chosen Plascon top coat



FUNGAL / ALGAE / MILDEW GROWTH



- Scrub the affected area with a household bleach solution mixed 1 part bleach to 2 parts water
- Allow to dry for 1 hour
- Scrape and brush (hard bristle) to remove dead growth
- Scrub with clean water to remove all traces of bleach
- Allow to dry



EFFLORESCENCE



- Wipe surface with a 5% white vinegar solution in water
- Allow to react for 10 minutes then rinse with tap water
- If there is water ingress, identify root cause
- Root cause determination:
 - inspect for cracks, inspect drainage,
 - inspect roof, flashing and gutters for leaks
- Dry brush to remove efflorescence
- Address root cause problem as described in this section
- Wait 3 weeks to ensure the effect does not re-occur, then prime and top coat if required





THE PROBLEM	HOW TO FIX	THE SOLUTION
<p>MOISTURE Moisture is evident through rising damp, which causes blistering & peeling.</p> 	<ul style="list-style-type: none"> Remove all paint to bare plaster by scraping and/or grinding Repair plaster defects with Polycell Masonry Patching Plaster Brush on 3 coats of Plascon Dampseal (WDS 1), thinning the 1st coat 30 % with mineral turpentine Allow overnight drying between coats Finish with a chosen Plascon top coat 	
<p>ALKALINITY Paint becomes soft & cheesy and can blister.</p> 	<ul style="list-style-type: none"> Completely remove affected paint with a scraper and wash with Polycell Sugar Soap Allow to dry Apply Plascon Plaster Primer (UC 56) Allow to dry and finish with a chosen Plascon top coat 	
<p>POROSITY Paint loses its gloss finish & has poor coverage.</p> 	<ul style="list-style-type: none"> Seal surface with Plascon Plaster Primer (UC 56) or Plascon Bonding Liquid (CVI 14) Allow to dry for 16 hours Finish with a chosen Plascon top coat 	
<p>PEELING (gypsum surfaces only)</p> 	<ul style="list-style-type: none"> Completely remove affected paint using RemovALL All Purpose Paint Remover (RRA220) Feather the edge using 100 grit sandpaper Patch prime with Plascon Plaster Primer (UC56) or Plascon Bonding Liquid (CVI 14) Allow to dry and finish with a chosen Plascon top coat 	
<p>PEELING (plastered surfaces only)</p> 	<ul style="list-style-type: none"> Remove paint by using RemovALL All Purpose Paint Remover (RRA220) Feather edge with 100 grit sand paper and ensure surface is dry and dust free, patch and prime with Plascon Plaster Primer (UC 56) Allow to dry and finish with a chosen Plascon top coat 	





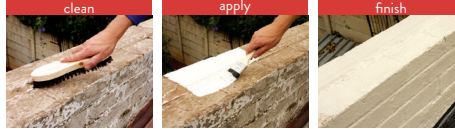
THE PROBLEM	HOW TO FIX	THE SOLUTION
-------------	------------	--------------

EXTERNAL PLASTERED SURFACES

Water affected external plastered surfaces, such as parapets, walls, pillars etc

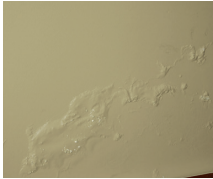


- All surfaces must be clean, firm and thoroughly dry before painting
- Repair and fill cracks (see common problems)
- Prime with Plascon Plaster Primer (UC 56)
- Apply Plascon Multiseal (WSS 2) by brush or roller and build up to a thickness of 1mm in 3 coats, allowing 4 hours to dry between coats
- Finish with a chosen Plascon top coat

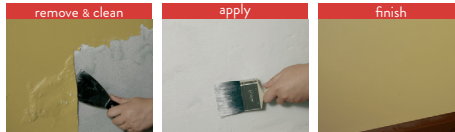


WALLS

Rising and penetrating damp (occurs to 1.1m above ground level)



- Remove any paint completely, back to a cement plastered surface
- Wash with Polycell Sugar Soap, rinse and allow to dry
- Remove and repair poor plaster with Polycell Masonry Patching Plaster
- Apply 3 coats of Plascon Dampseal (WDS 1), allowing 24 hours drying time between coats
- Thin the first coat 30% with mineral turpentine
- Finish with a chosen Plascon top coat



WALLS

Moisture ingressed through face bricks



- Remove any cracked or friable cement between bricks
- Repair with Polycell Masonry Patching Plaster
- Wash with Polycell Sugar Soap, rinse and allow to dry
- Apply 3 coats of Plascon Brickseal (WBS 1), allowing 4 hours drying time between coats



ROOFS

Water affected roofs in & around vulnerable areas, like bolts



- All surfaces must be clean, firm and thoroughly dry before painting
- Apply Plascon Multiseal (WSS 2) by brush or roller and build up to a thickness of 1mm in 3 coats, allowing 4 hours to dry between coats.
- Finish with a chosen Plascon Nuroof colour





THE PROBLEM	HOW TO FIX	THE SOLUTION
-------------	------------	--------------

RESINOUS KNOTS

Knots & resinous areas that discolour surfaces.



- Remove paint or varnish and wash area thoroughly with Plascon Lacquer thinners (ILS 1) to remove resin
- Paint knots with Plascon Woodcare Knotseal (PK2) and allow 1 hour to dry
- In severe cases 2 coats may be required
- Repaint or varnish



PEELING PAINTS OR VARNISH



- Remove paint by using RemovALL All Purpose Paint Remover (RRA220)
- Sand smooth with 150 grit sandpaper in direction of grain
- Dust off, repaint or varnish



HOLES & DEFECTS



Interior:

- Fill holes and defects using Polycell Woodfiller
- Allow to dry and then sand smooth

Exterior painted surface:

- Fill holes or defects with Mendall 90
- Work off smoothly while wet
- Allow 8 hours to dry then sand to a smooth finish
- Prime repaired area with Plascon Plaster Primer (UC 56)

- Finish as required

Exterior varnished surface:

- Sand the specific wood to create sawdust
- Mix sawdust and varnish to be used, into a stiff paste for filling
- Allow 16 hours to dry and sand to smooth finish
- Finish as required





THE PROBLEM	HOW TO FIX	THE SOLUTION
-------------	------------	--------------

MILD STEEL RUST



- Remove peeling paint by scraping or with Removall All purpose paint remover (RRA 220)
- Rust can be treated by using Polycell End Rust (502102)
- Rust remover/ converter should NOT be used on galvanised iron
- Wash the steel with Plascon Steeltect Aquasolv Degreaser and rinse well with clean water
- Allow to dry



MILD STEEL PEELING



- Remove peeling paint by scraping, mechanical wire brushing or with Plascon RemovALL All Purpose Paint Remover (RRA 220)
- Scrub surface with Plascon Steeltect Aquasolv Degreaser
- Rinse thoroughly with water and allow to dry
- Allow to dry and finish with a chosen Plascon top coat



GALVANISED STEEL PEELING



- Remove peeling paint by scraping, mechanical wire brushing or with Plascon RemovALL All Purpose Paint Remover (RRA 220)
- Clean by brushing Plascon Galvanised Iron Cleaner (GIC 1) onto any bare metal surface
- Leave for 2 minutes, rinse with water and allow to dry
- Test for a water break free surface*
- Prime galvanised iron with Plascon Steeltect Galvanised Iron Primer
- Finish with a chosen Plascon top coat



*Pour half a cup of water on surface and wipe your hands through it, the water must run freely, if it collects in droplets it is not water break free.

